

## WCH Series Wafer Check Valves

10" TO 14" PVC

### KEY FEATURES

- PVC Body and Disc
- FPM, EPDM or PTFE O-Ring Seats
- Compact and Lightweight
- Easy Installation
- Vertical or Horizontal Operation

### OPTIONS

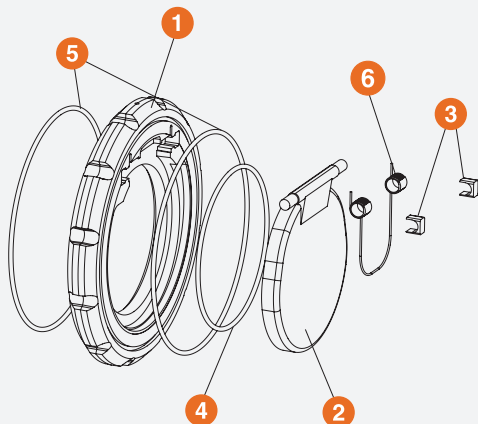
- Stainless Steel or Hastelloy® Disc Springs\*



\*12" and 14" valve shown with optional spring

## TECHNICAL INFORMATION

### EXPLODED VIEW



### SELECTION CHART

SIZE	MATERIAL	END CONNECTION	O-RING	SPRING	PRESSURE RATING
10" – 14" (DN250 – DN350)	PVC	Wafer	FPM, EPDM or PTFE*	316 SS, Hastelloy®	150 PSI @ 10 Bar @ 21°C 70°F Non-Shock

\* PTFE encapsulated FPM

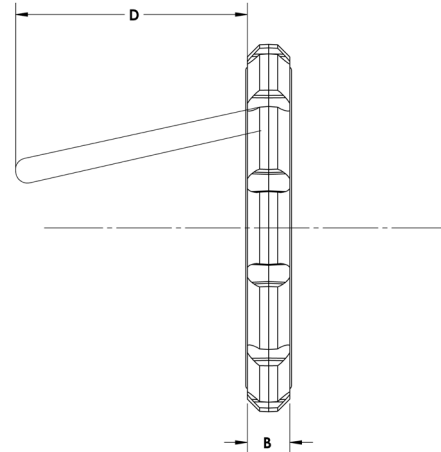
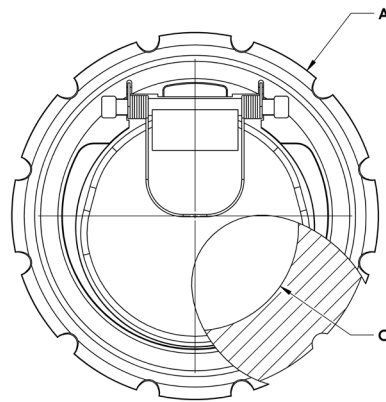
# WCH Series Wafer Check Valves

10" TO 14" PVC

## TECHNICAL INFORMATION, CONTINUED

### PARTS LIST

1. Body
2. Valve Flapper
3. Flap-clips
4. Seat O-Ring
5. Body O-Ring
6. Spring (Optional)



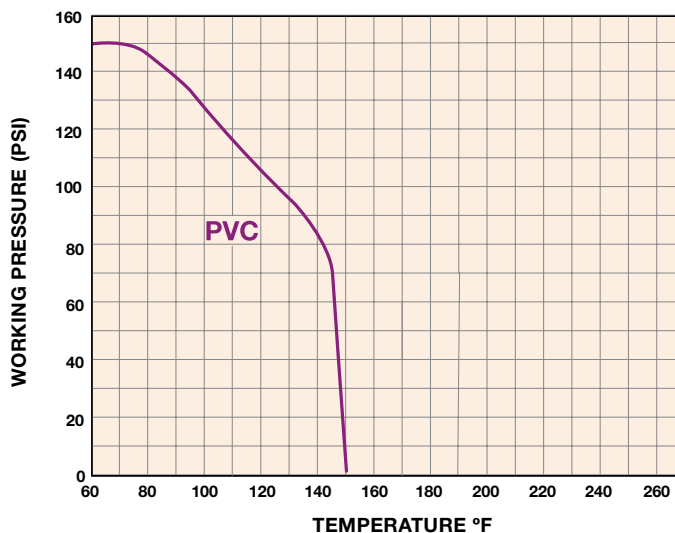
### DIMENSIONS

SIZE in / DN	A in / mm	B in / mm	C in / mm	D in / mm
10 / 250	13.50 / 343	1.65 / 42	7.32 / 186	7.30 / 185
12 / 300	16.00 / 406	1.85 / 47	9.01 / 229	8.90 / 226
14 / 350	17.62 / 448	2.00 / 49	10.27 / 261*	10.6 / 269

Dimensions are subject to change without notice – consult factory for installation information

\*Effective Diameter

### OPERATING TEMPERATURE/PRESSURE



### Cv VALUES

SIZE in / DN	SCH 40
10 / 250	1790
12 / 300	2856
14 / 350	4035

### PRESSURE LOSS CALCULATION FORMULA

$$\Delta P = \left[ \frac{Q}{C_v} \right]^2$$

$\Delta P$  = Pressure Drop

Q = Flow in GPM

Cv = Flow Coefficient



Hayward is a registered trademark  
of Hayward Industries, Inc.  
© 2020 Hayward Industries, Inc.

USA: 1.888.429.4635 • Fax: 1.888.778.8410 • One Hayward Industrial Drive • Clemmons, NC 27012 • Email: hfcsales@hayward.com

Canada: 1.888.238.7665 • Fax: 1.905.829.3636 • 2880 Plymouth Drive • Oakville, ON L6H 5R4 • Email: hfcanada@hayward.com

Visit us at: haywardflowcontrol.com