



**NEW PRODUCT PREVIEW**
**HIGH-DENSITY POLYETHYLENE END CONNECTORS**

FOR SDR 9, 11 AND 17 PIPING SYSTEMS

**KEY FEATURES**

- SDR 9 & 11 Available in sizes 1/2" - 4"
- SDR 17 Available in sizes 1-1/4" to 4"
- Hayward HDPE End Connectors are compatible with select Hayward PVC, CPVC or GFPP solutions only
- Butt Fusion Long Spigot Design - also suitable for electrofusion and socket weld systems
- Comply to ASTM D3261 dimensional requirements.
- Applications include but not limited to water and wastewater, mining, landfill and irrigation systems

**OPTIONS**

- Sizes Available Per ISO15494 Upon Request

**MATERIALS**

- High-density Polyethylene per ASTM D3350 Cell Classification PE44574C CC2, ASTM PE4710 / ISO PE100


**TECHNICAL INFORMATION**
**SELECTION CHART**

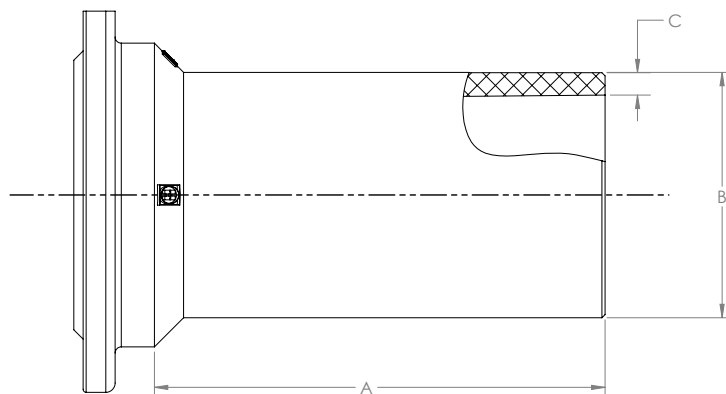
SIZE	SDR	PRESSURE RATING*	HAYWARD SERIES AVAILABILITY								
			SIZE in / mm	TBH	TB GFPP	TW/LA	TC	YC	YS	SB	FLV
1/2" - 4"	9	235 PSI @ 70°F 16 Bar @ 21°C Non-Shock	1/2	■	■	■	■	■	■	-	-
			3/4	■	■	■	■	■	■	-	-
			1	■	■	■	■	■	■	■	-
1/2" - 4"	11	180 PSI @ 70°F 12 Bar @ 21°C Non-Shock	1-1/4	■	■	-	■	■	■	-	-
			1-1/2	■	■	-	■	■	■	■	-
1-1/4" - 4"	17	125 PSI @ 70°F 8 Bar @ 21°C Non-Shock	2	■	■	■	■	■	■	■	■
			63mm	■	■	■	■	■	■	■	■
			3	■	■	■	■	■	■	■	■
			4	■	■	■	■	■	■	■	■

†HDPE end connectors may be provided as a kit. Contact factory for metric sizes availability.  
 \*Pressure rating for HDPE fitting / system, not valve, strainer or filter solution. Refer to IOM for Pressure / Operating Temperature Chart.

# HIGH-DENSITY POLYETHYLENE END CONNECTORS

FOR SDR 9, 11 AND 17 PIPING SYSTEMS

## TECHNICAL INFORMATION, CONTINUED



### DIMENSIONS

SDR 9	SIZE	A	B	C	D	WEIGHT
	in / mm	in / mm	in / mm	in / mm	in / mm	lbs / kg
	1/2	2.60 / 66	0.840 / 21.336	0.090 / 2.286	0.660 / 16.764	0.04 / 0.02
	3/4	2.89 / 73	1.050 / 26.670	0.117 / 2.972	0.816 / 20.726	0.07 / 0.03
	1	2.97 / 75	1.315 / 33.401	0.146 / 3.708	1.023 / 25.984	0.11 / 0.05
	1-1/4	3.43 / 87	1.660 / 42.164	0.184 / 4.674	1.292 / 32.817	0.24 / 0.11
	1-1/2	3.66 / 93	1.900 / 48.260	0.211 / 5.359	1.478 / 37.541	0.28 / 0.13
	2	4.37 / 111	2.375 / 60.325	0.264 / 6.706	1.847 / 46.914	0.47 / 0.21
	63mm	4.57 / 116	2.480 / 62.992	0.276 / 7.010	1.928 / 48.971	0.51 / 0.23
	3	5.80 / 147	3.500 / 88.900	0.389 / 9.881	2.722 / 69.139	1.39 / 0.63
	4	6.62 / 168	4.500 / 114.300	0.500 / 12.700	3.500 / 88.900	2.53 / 1.15

SDR 11	SIZE	A	B	C	D	WEIGHT
	in / mm	in / mm	in / mm	in / mm	in / mm	lbs / kg
	1/2	2.60 / 66	0.840 / 21.336	0.076 / 1.930	0.688 / 17.475	0.04 / 0.02
	3/4	2.89 / 73	1.050 / 26.670	0.095 / 2.413	0.860 / 21.844	0.07 / 0.03
	1	2.97 / 75	1.315 / 33.401	0.119 / 3.023	1.077 / 27.356	0.11 / 0.05
	1-1/4	3.43 / 87	1.660 / 42.164	0.151 / 3.835	1.358 / 34.493	0.23 / 0.10
	1-1/2	3.66 / 93	1.900 / 48.260	0.173 / 4.394	1.554 / 39.472	0.25 / 0.11
	2	4.37 / 111	2.375 / 60.325	0.216 / 5.486	1.943 / 49.352	0.42 / 0.19
	63mm	4.57 / 116	2.480 / 62.992	0.225 / 5.715	2.030 / 51.562	0.46 / 0.21
	3	5.80 / 147	3.500 / 88.900	0.318 / 8.077	2.864 / 72.746	1.24 / 0.56
	4	6.62 / 168	4.500 / 114.300	0.409 / 10.389	3.682 / 93.523	2.25 / 1.02

SDR 17	SIZE	A	B	C	D	WEIGHT
	in / mm	in / mm	in / mm	in / mm	in / mm	lbs / kg
	1-1/4	3.43 / 87	1.660 / 42.164	0.098 / 2.489	1.464 / 37.186	0.19 / 0.09
	1-1/2	3.66 / 93	1.900 / 48.260	0.112 / 2.845	1.676 / 42.570	0.23 / 0.10
	2	4.37 / 111	2.375 / 60.325	0.140 / 3.556	2.095 / 53.213	0.36 / 0.16
	63mm	4.57 / 116	2.480 / 62.992	0.146 / 3.708	2.188 / 55.575	0.39 / 0.18
	3	5.80 / 147	3.500 / 88.900	0.206 / 5.232	3.088 / 78.435	1.07 / 0.49
	4	6.62 / 168	4.500 / 114.300	0.264 / 6.706	3.972 / 100.889	1.86 / 0.84



Hayward is a registered trademark of Hayward Industries, Inc. © 2022 Hayward Industries, Inc.

†Dimensions are subject to change without notice – consult factory for installation information

NPP0822

USA: 1.888.429.4635 • Fax: 1.888.778.8410 • One Hayward Industrial Drive • Clemmons, NC 27012 • Email: hfcsales@hayward.com  
 Canada: 1.888.238.7665 • Fax: 1.905.829.3636 • 2880 Plymouth Drive • Oakville, ON L6H 5R4 • Email: hfcanada@hayward.com  
 Visit us at: haywardflowcontrol.com